

SKU: BV5112

- 🇬🇧 Mars Series 77 Stainless Steel 3 Piece Ball Valve
- 🇩🇪 Mars Serie 77 Edelstahl 3 Stück Kugelhahn
- 🇪🇸 Mars Válvula de bola de la serie 77 de acero inoxidable de 3 piezas
- 🇫🇷 Mars Série 77 en acier inoxydable 3 Piece Ball Valve

Valves™
ONLINE

- 1/4 " - 4" Stainless Steel 3 Piece Direct Mount Ball Valve
- 1/4 " - 4" Edelstahl 3 Stück Direct Mount Kugelhahn
- 1/4 " - 4" Acero inoxidable de 3 piezas de la válvula de bola de montaje directo
- 1/4 " - 4" Acier inoxydable 3 Piece montage direct Ball Valve

MARS SERIES 77 Direct Mount Full Bore Ball Valve



- **Full Bore, 3 Piece Design**
- **Various End Connections**
- **ISO Mounting Pad for Easy Actuation**
- **Pressure Rating 1000 PSI**
- **RPTFE Seats**

The Mars series 77 is a three piece full bore ball valve in stainless steel, it has a pressure rating of 1000 PSI PN63. The valve has a raised ISO mounting pad with a square stem top for direct mounting for actuation and is fitted with a blow out proof stem. RPTFE seats and end connections in BSPP, NPT, Socket and Butt Weld.

The valve is supplied with a lockable steel lever with a blue PVC sleeve. The unique three piece construction makes it possible to inspect or repair this ball valve very easily. The body can be removed from the pipe section, complete with ball and sealing rings in-situ and refitting of seals can be achieved without removing the connection pieces from the pipe.



Description

Mars series 77 three piece full bore and fully maintainable ball valve. Direct Mount top for easy actuation. RPTFE seats. Pressures up to 1000 PSI. Temperature Range -20° C to 180° C.



Beschreibung

Mars Serie 77 mit drei Stücken mit vollem Durchgang und komplett wartungsKugelHahn. Direct Mount oben für eine einfache Betätigung . RPTFE-Sitzen . Drücke bis zu 1000 PSI . Temperaturbereich -20 ° C bis 180 ° C







Descripción

Mars serie 77 de tres piezas de paso total y válvula de bola completamente mantenible . Parte superior de montaje directo para un fácil accionamiento . Asientos de RPTFE . Presiones de hasta 1000 PSI . Rango de temperatura de -20 ° C a 180 ° C.



Description

Mars série 77 trois pièces passage intégral et vanne à bille entièrement maintenable . Montage direct top pour un actionnement facile. Sièges RPTFE . Pressions jusqu'à 1000 psi. Plage de température de -20 ° C à 180 ° C

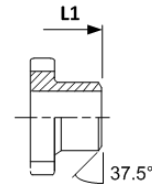
-  Mars Series 77 Stainless Steel 3 Piece Ball Valve
-  Mars Serie 77 Edelstahl 3 Stück Kugelhahn
-  Mars Válvula de bola de la serie 77 de acero inoxidable de 3 piezas
-  Mars Série 77 en acier inoxydable 3 Piece Ball Valve

3 Piece Mars Series 77 ball Valve

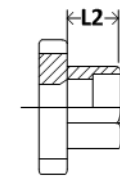
- Full Bore, 3 Piece Design
- Various End Connections
- ISO Mounting Pad for Easy Actuation
- Pressure Rating 1000 PSI
- RPTFE Seats

Technical and Parts List			
No.	Part Name	Material	Qty
1	Body	CF8M	1
2	End Cap	CF8M	2
3	Ball	SUS316	1
4	Stem	SUS316	1
5	Stem Nut	SUS304	1
6	Thrust Washer	SUS304	1
7	Handle	SUS304	1
8	Seat	Reinforced PTFE	2
9	Gland Ring	SUS304	1
10	Stem Packing	PTFE	1
11	Belleville washer	SUS304	2
12	Nut	SUS304	1

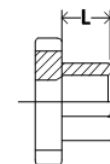
Specification	
Pressure range	1/4" to 4" 1000 PSI
Size	1/4" to 4"
Temperature range	minus 20° to + 200° (see graph)
Movement	90 deg turn
Cycle life	1,000,000 operations
Approvals	Ex toll2 GD ATEX 94/9/EC CE - 0035 PED/97/23/EC



BUTT WELD END (SCH 40)



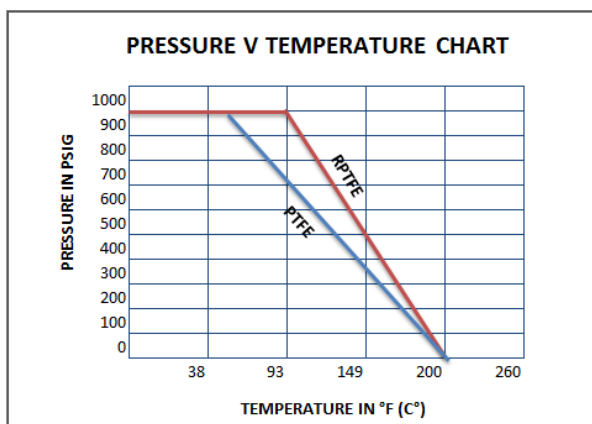
SOCKET WELD END







Threaded

End connection Options

- Socket Weld
- Butt Weld
- NPT



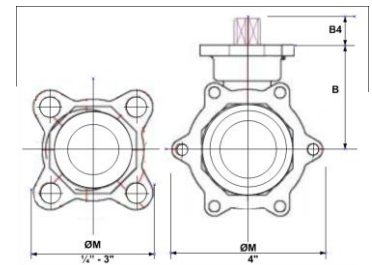
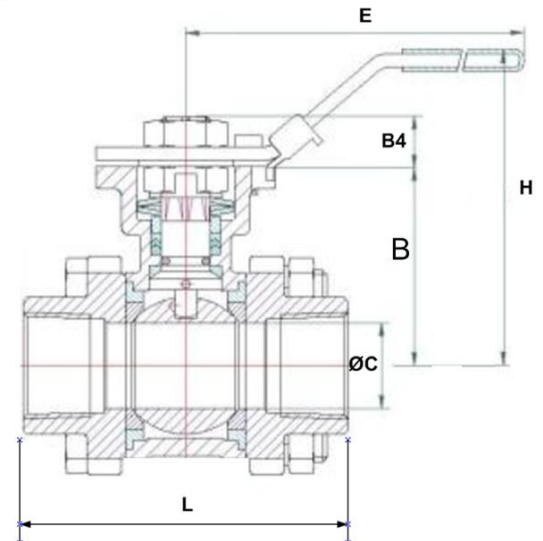
Three piece ball valve used in industrial systems such as Water, Oil, Gas and slightly corrosive media up to maximum 68 bar. Suitable for manual and actuated isolation.

-  Mars Series 77 Stainless Steel 3 Piece Ball Valve
-  Mars Serie 77 Edelstahl 3 Stück Kugelhahn
-  Mars Válvula de bola de la serie 77 de acero inoxidable de 3 piezas
-  Mars Série 77 en acier inoxydable 3 Piece Ball Valve

3 Piece Mars Series 77 ball Valve

- Full Bore, 3 Piece Design
- Various End Connections
- ISO Mounting Pad for Easy Actuation
- Pressure Rating 1000 PSI
- RPTFE Seats

SIZE	Top Works		Break away Torque		Flow rates	
	D	ISO 5211	Nm	In/lbs	Cv U.S. GPM	Kv (M3/h)
1/4"	9	F03/F04	7	58	8	6.8
3/8"	9	F03/F04	7	58	8	6.8
1/2"	9	F03/F04	7	58	15	12.8
3/4"	9	F03/F04	8	69	34	29.1
1"	11	F04/F05	14	127	56	47.8
1 1/4"	11	F04/F05	20	173	85	72.6
1 1/2"	14	F05/F07	29	253	125	106.8
2"	14	F05/F07	39	346	250	213.7
2 1/2"	17	F07/F10	59	518	320	273.3
3"	17	F07/F10	91	806	580	495.3
4"	17	F07/F10	124	1094	1020	871.1



Dimensions												
Size	DN	C	L	L1	L2	LE	H	J	E	B1	B4	Weight
1/4"	8	11.6	63	62.7	10	255	77	1.6	139	42	6.4	0.63
3/8"	10	12.5	63	62.7	10	255	77	1.6	139	42	6.4	0.63
1/2"	15	15	66	65.7	10	255	77	1.6	139	42	6.4	0.66
3/4"	20	20	76	76.2	13	255	83	1.6	139	48	6.9	0.82
1"	25	25	86	86.2	13	245	96	1.6	165	56.6	11.2	1.25
1 1/4"	32	32	102	102.8	13	255	100	1.6	165	61	11.2	1.94
1 1/2"	40	38	120	119.4	13	260	127	1.6	215	77.5	14.2	3.15
2"	50	50	131	131.4	16	275	134	1.6	215	85	14.2	4.56
2 1/2"	65	63	164	164	16	334	167	2	300	109	17.1	9.01
3"	80	76	182	182.7	16	354	176	2	370	117	18.1	12.3
4"	100	96	236	236.2	20	365	192	3.5	370	132	17.1	21.54

LE = Extended Butt Weld

