

Mars Series 22 Ball Valve with Spring Close Handle

- ISO 5211 Mounting Top
- Full Bore with BSP & NPT Threads
- Dead Mans Handle
- Insulated Grip SRS Lever Handle
- 1000 PSI Rated

Description

The BV5109 is a spring energized handle, where the ball valve once operated will return to pre-determined closed (or open) position when the operator disengages from handle. The valve provides a safe and positive fail closed or open operation, offering reliable sampling, filling and dispensing. Full stainless steel construction provides excellent corrosion resistance for extended service life. Two piece full bore ball valve Type Mars 22 with Dead Mans Handle (Spring Return). Screwed BSP or NPT Thread.

Available in BSP and NPT
Non repairable valve



Description

Supplied in both BSP and NPT the series 22 Spring Close manual (dead mans handle) is a reliable full bore, two piece ball valve. Manufactured in stainless steel with reinforced PTFE seats offering low and smooth torque. This valve provides safe operation in both general industrial and chemical applications.
Non Maintainable. Lockable handle.



Beschreibung

Sowohl in BSP als auch in NPT ist das Spring Close-Handbuch der Serie 22 (Totmanngriff) ein zuverlässiger zweiteiliger Kugelhahn mit vollem Durchgang. Hergestellt aus Edelstahl mit verstärkten PTFE-Sitzen, die ein niedriges und gleichmäßiges Drehmoment bieten. Dieses Ventil bietet einen sicheren Betrieb sowohl in allgemeinen industriellen als auch in chemischen Anwendungen. Nicht wartbar. Abschließbarer Griff.



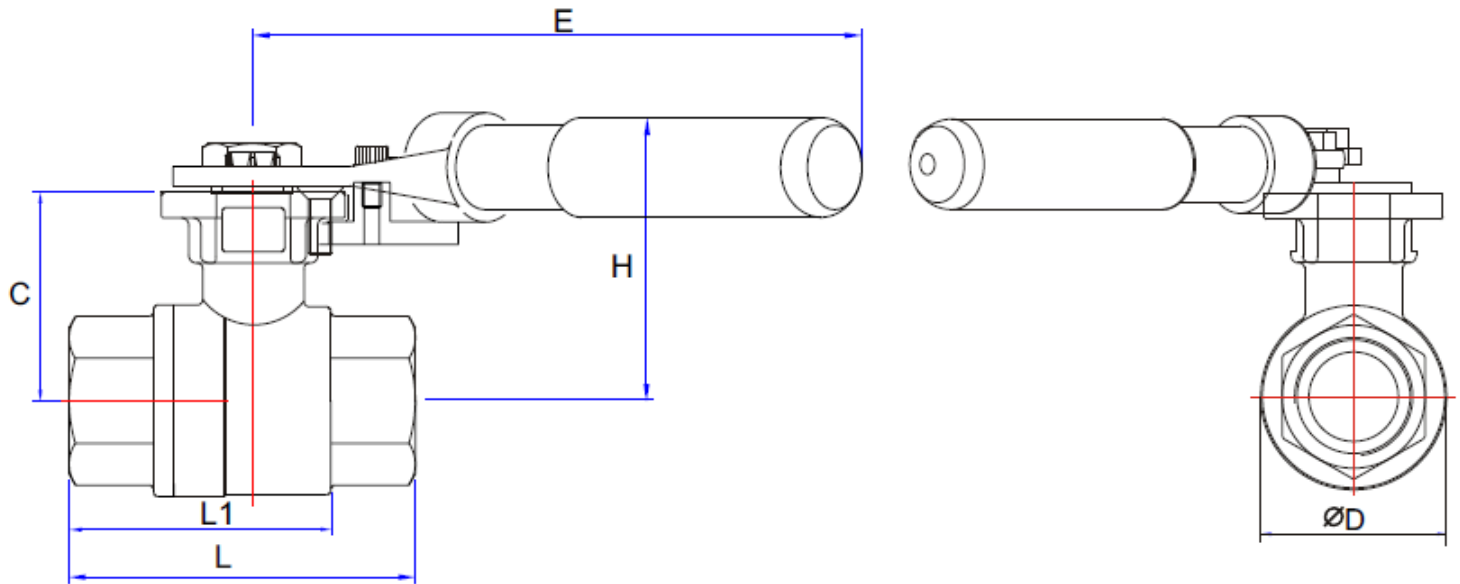
Descripción

Suministrado tanto en BSP como en NPT, el manual de la serie 22 Spring Close (mango de hombre muerto) es una válvula de bola de dos piezas confiable de diámetro completo. Fabricado en acero inoxidable con asientos de PTFE reforzado que ofrecen un par bajo y suave. Esta válvula proporciona un funcionamiento seguro en aplicaciones industriales y químicas generales. No mantenible Manija con cerradura.



Description

La série 22 Spring Close (poignée à bout mort) de la série 22 est fournie avec les robinets BSP et NPT. Fabriqué en acier inoxydable avec sièges en PTFE renforcé offrant un couple faible et lisse. Cette vanne offre un fonctionnement sûr dans les applications industrielles et chimiques générales. Non maintenable. Poignée verrouillable.



Dimensions

Size	C	E	H	L	L1	ØD	W(kg)	ISO5211
¼"	38.6	160	58.6	65	50	37	1.53	F03/F04
3/8"	38.6	160	58.6	65	50	37	1.51	F03/F04
½"	38.6	160	58.6	65	50	37	1.46	F03/F04
¾"	46.1	160	66.1	74.6	56.6	43	1.6	F03/F04
1"	56.6	160	76.6	88	65.6	52	2.1	F04/F05
1¼"	61	160	81	102	77	63	2.5	F04/F05
1½"	77.5	210	97.5	110	87	73	3.55	F05/F07
2"	85.2	210	105.2	125	97.5	90	4.6	F05/F07

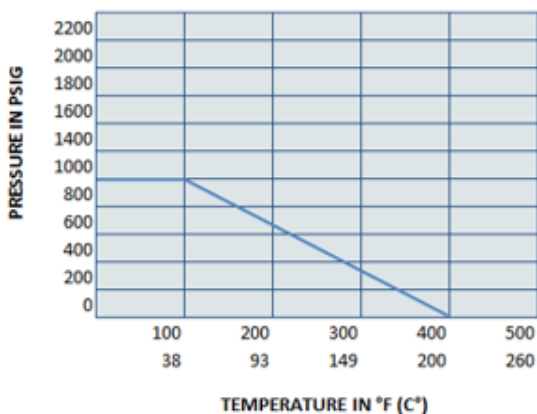
Technical and Parts List

No.	Part Name	Material	Qty
1	Body	ASTM A351Gr. CF8M	1
2	Cap	ASTM A351Gr. CF8M	1
3	Ball	SUS316	1
4	Stem	SUS316	1
5	Stem Nut	SUS304	1
6	Stem Washer	SUS304	1
7	Handle	SUS304	1
8	Seat	PTFE	2
9	Gland Bush	SUS304	1
10	Stem Packing	RPTFE	1
11	Gland Packing	PTFE	1
12	Handle Sleeve	VINYL	1
13	Joint Gasket	PTFE	1
14	Locking Device	SUS304	1
15	Antistatic Device	SUS304	1

Specification

Pressure range	1000 PSI
Size	1/4" to 2"
Temperature range	minus 20° to + 180°
Movement	90 deg turn
Cycle life	1,000,000 operations
Port	Full Bore

PRESSURE V TEMPERATURE CHART



All information is sourced from our manufacturer's data and is intended for guidance only - Valves Online can accept no liability for changes, omissions or errors.