





SKU: EE5245

-  VOLT Economy PN16/40 Ball Valve with Electric Actuator
-  VOLT Economy PN16 / 40 Kugelhahn mit elektrischem Antrieb
-  VOLT Economía PN16 / 40 Válvula de bola con actuador eléctrico
-  VOLT Economie PN16 / 40 Ball Valve avec actionneur électrique

Valves[™]
O N L I N E

- 1/2" - 8" Flanged PN16/40 with Electric Actuator
- 1/2" - 8" mit Flansch PN16 mit Hubantrieb
- 1/2" - 8" Con bridas PN16 / 40 con actuador eléctrico
- 1/2" - 8" Flanged PN16 / 40 avec actionneur électrique



- **Fully Maintainable**
- **PN16/40 1/2" - 2" – Compact Actuator**
- **PN16 2 1/2" - 8" – Standard Industrial**
- **Various Voltages**
- **Full Bore**
- **Limit Switches Included**
- **Offers Reliability with Economy**

The VOLT full bore PN16/40 ball valve when combined with our Electric Actuator, offers a single reliable source that meets all your actuation requirements.

The Valve is a 2 piece split body design with Full Ports in stainless steel and flanged PN16/40 (see flange ratings). It has RPTFE seats and PTFE/Viton stem seals. The electric actuator (compact up to 2") (Standard Industrial 2 1/2" and above) offers power open and power closed operation. Sized with 30% extra safety factor, this unit fits directly onto the valve giving you an exceptional combination. The Actuator offers switches, anti-condensation heaters, manual override and position indicator as standard. Some valves may require Mounting Kits.

Economy PN16/40 Flanged Ball Valve with Electric Actuator



Description

Our Economy, Direct mount ISO 5211 stainless steel full bore ball valve, flanged PN16/40 and RPTFE seats, PTFE / Viton stem seals, fitted onto our HQ Electric Rotary Actuator. Sizes range from 1/2" - 8". All actuators are designed to the latest specifications, are IP65 Protected and have Limit switch box, anti condensation heater, optical indicator and manual override. Temperature Range -20°C to 180°C.



Beschreibung

Unsere Wirtschaft, Direktmontage ISO 5211 Edelstahl voll Bohrung Kugelhahn , angeflanscht PN16 / 40 und RPTFE Sitze , PTFE / Viton Schaftdichtungen , Einbau auf unsere HQ Elektroschwenkantrieb . Die Größen reichen von 1/2 " - 8" . Alle Antriebe den neuesten Spezifikationen ausgelegt sind , sind nach IP 65 geschützt und haben Endschalterbox , Antikondensationsheizung , optische Anzeige und Handbetätigung . Temperaturbereich -20 ° C bis 180 ° C . Rango de temperatura de -20°C a 180°C







Descripción

Nuestra economía , montaje directo ISO 5211 de acero inoxidable válvula de bola de paso total , con bridas PN16 / 40 y RPTFE asientos, PTFE / Viton junta de vástago , armarios en nuestra sede eléctrico actuador rotativo . Los tamaños varían desde 1/2 " - 8 " . Todos los actuadores están diseñados para las últimas especificaciones , son índice de protección IP65 y tienen caja de interruptor de límite , calentador anticondensación , indicador óptico y maniobra de emergencia . Rango de temperatura de -20°C a 180°C .



Description

Notre économie , Direct mount ISO 5211 en acier inoxydable valve pleine balle de perçage , brides PN16 / 40 et RPTFE sièges, PTFE / Viton joints de tige , montées sur notre QG électrique Actionneur rotatif . Les tailles vont de 1/2 " - 8 " . Tous les actionneurs sont conçus pour les dernières spécifications , sont IP65 protégées et ont boîte Limite de commutateur , anti condensation de chauffage, indicateur optique et commande manuelle . Plage de températures -20°C à 180°C .

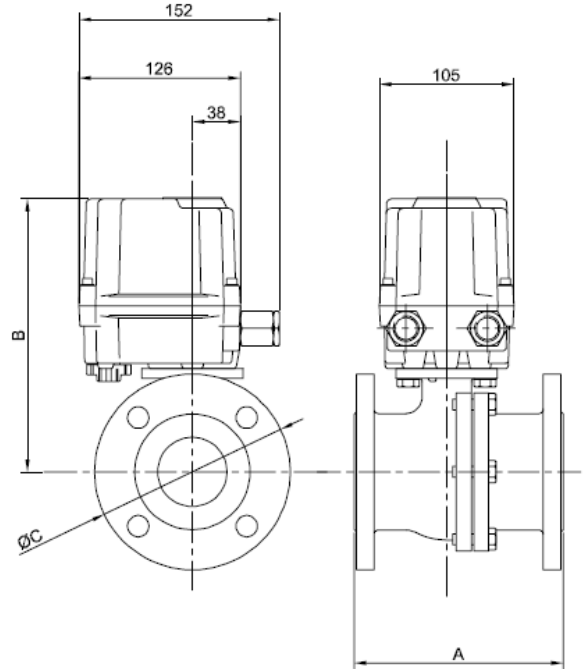
-  VOLT Economy PN16/40 Ball Valve with Electric Actuator
-  VOLT Economy PN16 / 40 Kugelhahn mit elektrischem Antrieb
-  VOLT Economía PN16 / 40 Válvula de bola con actuador eléctrico
-  VOLT Economie PN16 / 40 Ball Valve avec actionneur électrique

Electric Actuated PN16 Ball Valve

1/2" to 2"



The HQ-004 & HQ-006 electric actuators are specially designed for quarter turn applications such as this ball valve. Light and compact design with high output torques. A choice of various control options and a wide range of voltages to suit your specific requirements. High Quality electrical components and alloy gearing ensure reliability and extended life span. The actuator has additional features such as position indicator, limit switches, anti condensation heaters and a manual override (for opening or closing in the event of power failure).







Dimensions

Electric Full Bore

VALVE	Electric Full Bore	Full Bore A	B	N/M	ISO	Weight Kg
1/2"	HQ004	115	180	5	F03/F04	5.1
3/4"	HQ004	120	187	8	F03/F04	5.85
1"	HQ004	125	191	10	F04/F05	6.72
1 1/4"	HQ004	130	203	14	F04/F05	8.32
1 1/2"	HQ004	140	208	20	F05/F07	9.96
2"	HQ006	150	217	30	F05/F07	12.68
2 1/2"	HQ008	170	328.5	48	F07/F10	20.89
3"	HQ015	180	371	75	F07/F10	34.13
4"	HQ020 (Kit)	190	422	110	F10/F12	47.62
6"	HQ050	350	480	300	F10/F12	89
8"	HQ080	400	640	400	F12/F14	147

Standard Specification

Type (model)	Max Output Torque	Operating Time 50/60Hz	Motor Class E	Rated Current (A)				Weight Kg
				24V	110V	220V	24VDC	
		90°	W F					
HQ - 004	40NM	14 / 12 Secs		0.3	0.39/0.4	0.19/0.2	0.2	3
HQ - 006	80NM	14 / 12 Secs		0.3	0.39/0.4	0.19/0.2	0.2	3

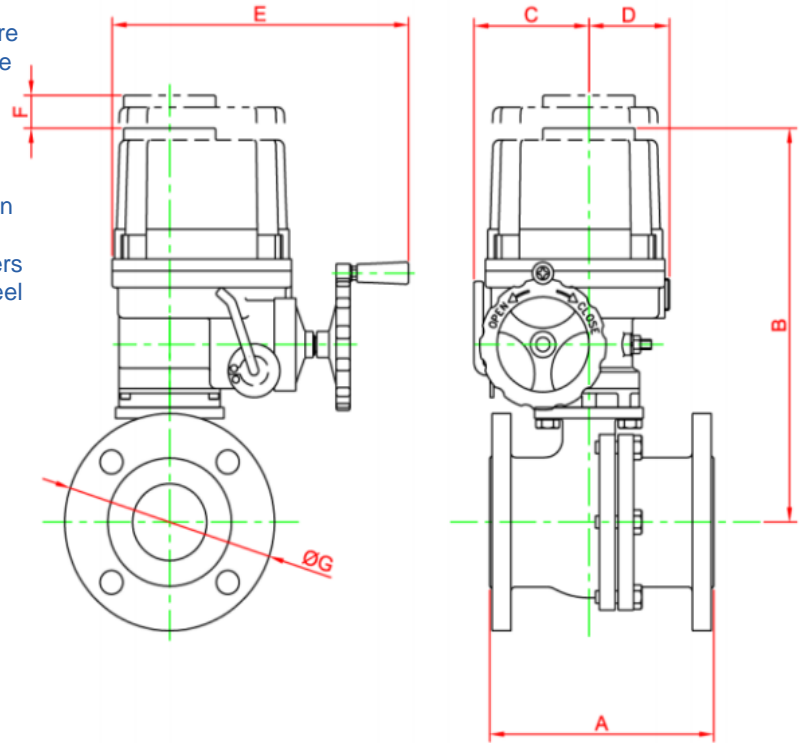
-  VOLT Economy PN16/40 Ball Valve with Electric Actuator
-  VOLT Economy PN16 / 40 Kugelhahn mit elektrischem Antrieb
-  VOLT Economía PN16 / 40 Válvula de bola con actuador eléctrico
-  VOLT Economie PN16 / 40 Ball Valve avec actionneur électrique

Electric Actuated PN16 Ball Valve

2½" to 8"



The electric actuators are available in a wide range of voltages and control options to suit your requirements. The actuator has additional features such as position indicator, limit switches, anti condensation heaters and a manual hand wheel override (for opening or closing in the event of power failure).



Dimensions

Electric Full Bore

VALVE	Electric Full Bore	Full Bore A	B	C	D	E	F	GØ	N/M	ISO	Weight Kg
2½"	HQ008	170	328,5	185	100	258	120	185	63	F07/F10	20.89
3"	HQ015	180	371	200	142	338	160	200	75	F07/F10	34.13
4"	HQ020(KIt)	190	422	220	142	338+ (Kit 100)	160	220	149	F10/F12	47.62
6"	HQ050	350	480	160	160	368	180	285	99	F10/F12	89
8"	HQ080	400	640	186	186	410	210	340		F12/F14	147

Standard Specification

Type (model)	Max Output Torque	Operating Time 50/60Hz	Max SQ. Drive	Rated Current (A)		Weight
		90°		MM	110V	
HQ008	80	16 / 13 Secs	17	1.1	0.55	7.4
HQ015	150	25 / 21 Secs	19	1.65	0.88	16.6
HQ020	200	25 / 21 Secs	19	1.67	0.89	16.6
HQ050	500	31 / 26	30	3.62	1.58	23
HQ080	800	34 / 28	40	4.1	2.2	29



VOLT Economy PN16/40 Ball Valve with Electric Actuator
 VOLT Economy PN16 / 40 Kugelhahn mit elektrischem Antrieb
 VOLT Economía PN16 / 40 Válvula de bola con actuador eléctrico
 VOLT Economie PN16 / 40 Ball Valve avec actionneur électrique

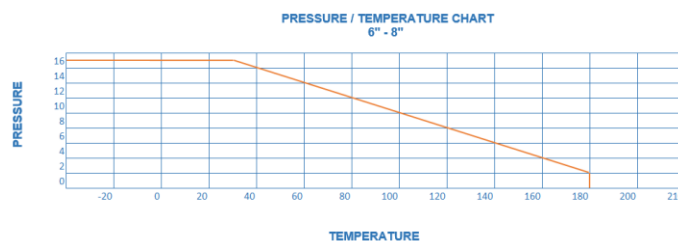
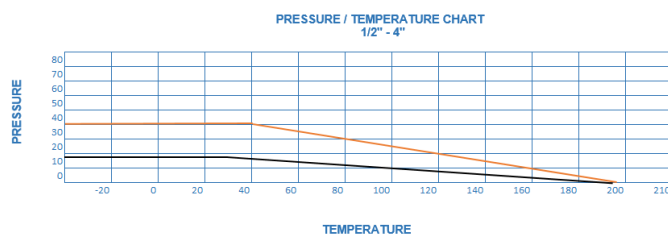
Electric Actuated PN16 Ball Valve

Standard Actuator Specification HQ004-HQ006

Enclosure	:	Weatherproof IP67
Power Supply	:	110/220V 1PH, 380/440V AC 3PH
Operating Time	:	14/12 Seconds
Limit Switches	:	4 x SPDT, 250V AC 3A
Space Heater	:	2W (110/240V AC)
Manual Override	:	Hexagon
Rated Current (Amps)	:	24VAC-0.3A 24VDC - 0.2A 110VAC - 0.4A 240VAC - 0.2A
Conduit Entries	:	2 x M20
Ambient Temperature	:	-20 °C to + 70 °C
External Coating	:	Dry Powder, Polyester

Standard Actuator Specification HQ008 & above

Enclosure	:	Weatherproof IP67 (IP68 Option)
Power Supply	:	110/220V 1PH, 24VAC/24VDC 380 3PH
Operating Time	:	see chart
Limit Switches	:	4 x SPDT, 250V AC 10A
Space Heater	:	20W (110/240V AC) Anti Condensation
Manual Override	:	Handwheel Declutchable
Duty Cycle (on/off duty)	:	S4, 70% standard, 100% for Max 30 Mins
Travel Angle	:	90°
Conduit Entries	:	2 x M25 (PG13.5 or 1/2" NPT Option)
Ambient Temperature	:	-20° C to + 60° C
Rated Current (Amps)	:	24VAC-0.3A, 24 VDC 0.2A, 110VAC-0.4A, 240VAC-0.2A
External Coating	:	Dry Powder, Polyester



Valve Specification

Details	Valve - 1/2" - 8"
Body Ends	CF8M
Ball and stem	316 St St
Seat	RPTFE
Pressure	40 Bar (1/2"-2") 16 Bar (2 1/2"-8")
Temperature	-25°C to + 200°C